

Major Transport Projects Pipeline

July 2026

Timings are indicative and subject to change

Stage

- Investment case/Detailed business case
- Route protection
- Pre-implementation (route protection, detailed design, some early works †)
- Implementation
- Progression is subject to funding availability

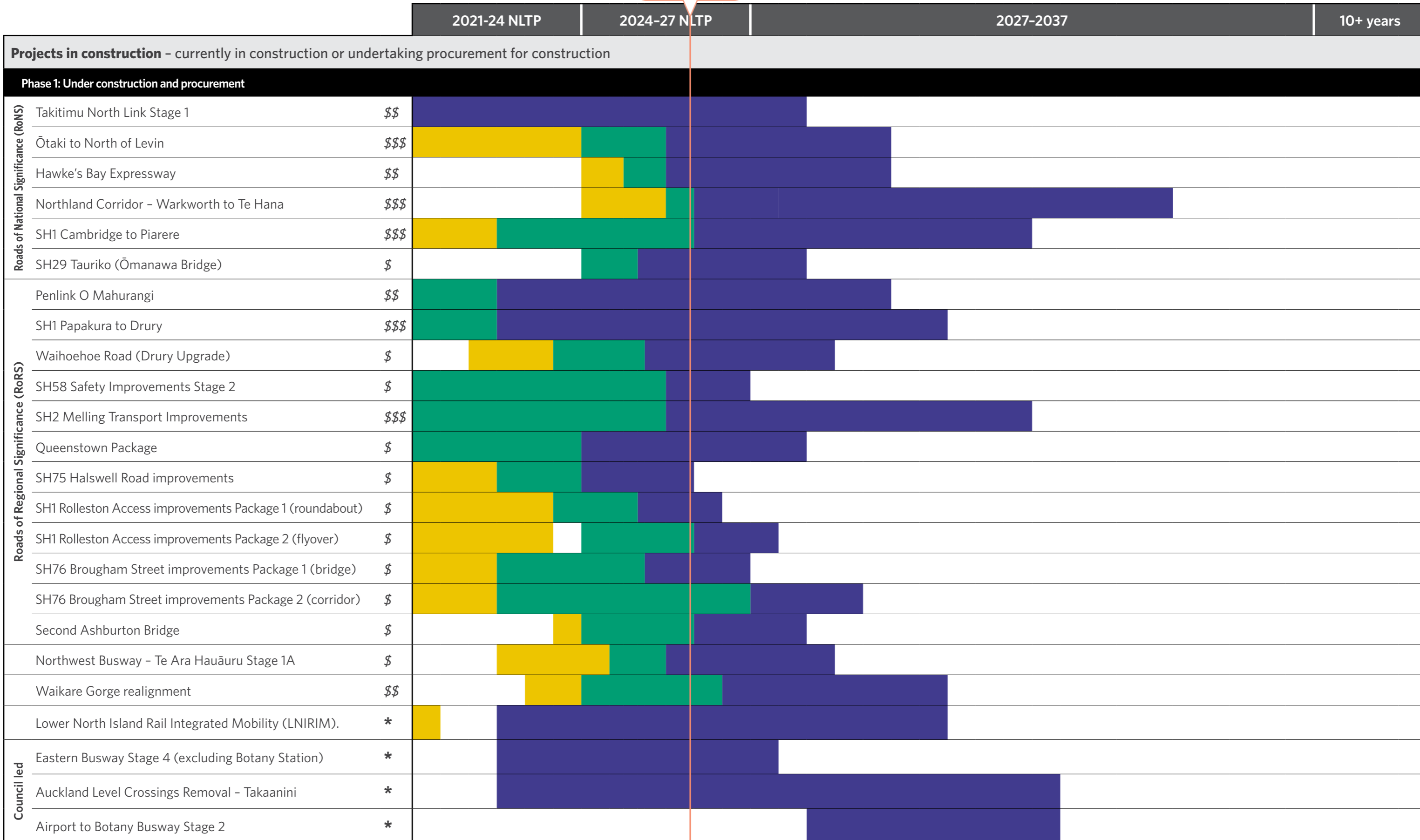
Cost

- \$\$\$ Above \$1b
- \$\$ \$300m-\$1b
- \$ Under \$300m
- * Non-NZTA project; cost to be confirmed
- † When applicable



26-94-106

We are here



Major Transport Projects Pipeline

July 2026

Timings are indicative and subject to change

Stage

- Investment case/Detailed business case
- Route protection
- Pre-implementation (route protection, detailed design, some early works †)
- Implementation
- Progression is subject to funding availability

Cost

- \$\$\$ Above \$1b
- \$\$ \$300m-\$1b
- \$ Under \$300m
- * Non-NZTA project; cost to be confirmed
- † When applicable



26-94-106

We are here

		2021-24 NLTP	2024-27 NLTP	2027-2037	10+ years
Future pipeline - completing a mix of route protection, design, consenting and focused property acquisition to prepare to be ready for construction					
Phase 2: Preparing for construction, and route protection					
Roads of National Significance (RoNS)	SH1 Belfast to Pegasus Motorway and Woodend Bypass	\$\$	■ ■ †		Implementation ready
	Mill Road Stage 1	\$\$\$	■ ■		Implementation ready
	Takitimu North Link Stage 2A	\$\$	■		Implementation ready
	SH6 Hope Bypass Stage 1	\$	■ ■		Implementation ready
	SH1 Wellington Improvements	\$\$\$	■ ■		Progressing to pre-implementation/implementation
	Northland Corridor - Alternative to Brynderwyn Hills	\$\$\$	■ ■		Progressing to pre-implementation/implementation
	SH29 Tauriko (wider scope)	\$\$\$	■ ■		Progressing to pre-implementation/implementation
	Hamilton Southern Links	\$\$\$	■		Progressing to pre-implementation/implementation
	Takitimu North Link Stage 2B	\$\$	■		Progressing to pre-implementation/implementation
	SH16 North-West Alternative Highway	\$\$\$	■ ■		Progressing to pre-implementation/implementation
Roads of National Significance (RoNS)	Northwest Busway - Te Ara Hauāuru Stage 1B and 2	\$\$\$	■ ■		Progressing to pre-implementation/implementation
	Northwest Busway - Te Ara Hauāuru Stage 3	\$\$\$	■ ■		Progressing to pre-implementation/implementation
Phase 3: Continuing more slowly					
Roads of National Significance (RoNS)	Northland Corridor - Te Hana to Whangārei (excluding Alternative to Brynderwyn Hills)	\$\$\$	■		Progressing to route protection/pre-implementation/implementation
	East-West Link	\$\$\$	■ ■		Progressing to route protection/pre-implementation/implementation
	Mill Road - Alfriston to Drury (previously Stages 2 and 3)	\$\$\$	■		Progressing to route protection/pre-implementation/implementation
	Petone to Grenada	\$\$\$	■ ■		Progressing to route protection/pre-implementation/implementation
	SH6 Hope Bypass Stage 2	\$\$	■		Progressing to pre-implementation/implementation
Council led	Auckland Level Crossings Removal (including Western Line)	*	■		Progressing to pre-implementation/implementation
	Airport to Botany Busway Stage 3 and 4	*	■		Progressing to pre-implementation/implementation
	Cross Valley Link	*	feasibility study completed		Progressing to investment case/route protection/pre-implementation/implementation